



# ST 1, 2 or 3 INCURSION

Multiple sessions per day

From  
\$10 pp

**Meet your local minibeasts - vital for biodiversity and ecosystem function!**  
**This dynamic hands-on incursion is designed to ignite curiosity and promote the importance of invertebrate diversity.**

**Aligned to meet NSW NESA science and geography syllabus outcomes.**

## Presentation for all students (30 minutes)

- Learn to identify and classify local invertebrates
- Discover the needs, habitats, quirky behaviour, lifecycles and niche roles of invertebrates
- Consider the importance of invertebrates for sustainability and wider biodiversity, including human well-being
- Explore the complex relationships invertebrates have with plants and other animals and determine why they are so important
- Discuss the ramifications of human impacts on invertebrates

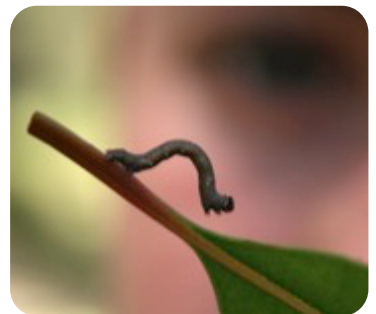


## Fieldwork in groups of 30 (60-80 minutes - stage dependent)

- Students will conduct a survey using supplied equipment and multiple techniques to discover evidence of particular species, and capture live specimens for classification and examination under a microscope, before releasing them.
- Students collect data and consider how well the surveyed habitat supports invertebrates and the animal and plant species that rely on them.

We visit you  
anywhere in greater  
Sydney!

**INVERTEBRATES ARE A SIGNIFICANT ECOLOGICAL INDICATOR  
THESE SPINELESS ANIMALS ARE THE BACKBONE OF THE ECOSYSTEM!  
DISCOVER HOW MINIBEASTS MAKE YOUR LOCAL HABITAT FUNCTION**



## Invertebrate Specimens

Marvel at our display including models, posters and a collection of over 200 preserved local invertebrates. Magnifiers supplied to develop identification skills.

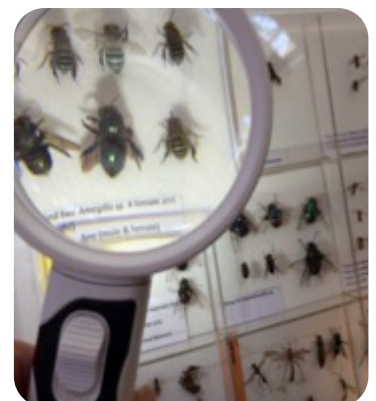
## Details

For prices, full syllabus links, content, risk assessment and testimonials please visit our website - or give us a buzz! Teaching resources supplied.

2019 NSW NESA SYLLABUS GEOGRAPHY & SCIENCE:

**FEATURES OF PLACES** (GE1-1,2)  
**PLACES ARE SIMILAR AND DIFFERENT** (GE2 - 1,2,3)  
**THE EARTH'S ENVIRONMENT** (GE2 - 1,2,3)

**FACTORS THAT SHAPE PLACES** (GE3 - 1,2,3)  
**LIVING WORLD** (ST1-3 - 4LW-S, ST3-5LW-T)  
**SKILLS** (ST1-3 1WS-S)



## ENQUIRIES & BOOKINGS

E | [abbie@kidsconnectingnature.com.au](mailto:abbie@kidsconnectingnature.com.au) M | 0417 240 789  
W | [www.kidsconnectingnature.com.au](http://www.kidsconnectingnature.com.au) P | 02 9656 1102